



NetApp™
Go further, faster



Software

NetApp SnapManager for Microsoft SQL Server

Streamline data management, reduce costs, and increase availability

KEY BENEFITS

Reduce costs

Reduce storage costs significantly with our space-efficient backup capabilities.

Increase productivity

Streamline data management and automate routine tasks so administrators can spend more time on value-added tasks.

Protect more data

Increase your backup frequency to protect more data automatically without impacting system performance.

Speed recovery

Restore a failed database of any size to full production in minutes.

Accelerate application development and testing

Create complete database clones in seconds without the need for additional storage space.

THE CHALLENGE

Increase availability of Microsoft SQL Server Databases while reducing costs

Microsoft® SQL Server® is the database of choice for many enterprise applications. Typically, numerous SQL Server applications are deployed to serve different departments within an enterprise. This often leads to complex deployment scenarios as different applications have different requirements for availability and data protection. As the number of Windows® servers storing SQL Server databases on direct-attached storage subsystems increases, this complexity also increases, requiring many resources across multiple departments to manage the server proliferation. Backing up databases stored on many different devices and, when necessary, restoring full backups and multiple incremental backups are time consuming. Cloning databases for application development and testing is often another time-consuming activity that typically requires significant amounts of additional storage capacity. Incrementally scaling storage to address growing demand might result in SQL Server downtime that:

- Jeopardizes the availability of SQL Server applications
- Reduces administrator and end-user productivity
- Impacts the ability to make quick and effective business decisions

THE SOLUTION

Deploy NetApp SnapManager for Microsoft SQL Server

NetApp® SnapManager® for Microsoft SQL Server is tightly integrated with Microsoft technology to help you streamline database storage management while simplifying storage layout planning, backup, and restore operations for SQL Server databases. Our data management solution can save you time and reduce resource requirements by enabling storage consolidation and simpler management across a SQL Server data farm. With SnapManager, you can dramatically reduce SQL Server data recovery times from hours to minutes, making it one of the fastest backup and recovery solutions available. You can also use SnapManager to automate critical processes such as data backup, restore,

Microsoft®
GOLD CERTIFIED
Partner

2009 ADVANCED INFRASTRUCTURE SOLUTIONS
Storage Solutions
PARTNER OF THE YEAR
WINNER

database recovery, and cloning. As a result, your IT staff will be free to focus more effort on other value-added activities. With SnapManager, you get an industry-leading combination of availability, scalability, and reliability for SQL Server environments.

REDUCE STORAGE COSTS

SnapManager for Microsoft SQL Server can help you significantly reduce storage costs. By consolidating SQL Server data onto NetApp storage, you save money by eliminating pools of unused storage, increasing storage efficiency, and simplifying data management. Our streamlined storage and data management features greatly reduce administrative overhead. SnapManager can also automatically migrate older backups to less expensive disk storage to get the same performance and flexibility of disk-based storage at a lower cost.

SnapManager for Microsoft SQL Server supports virtualized IT environments, including VMware® and Microsoft Hyper-V™. And because our solutions support both iSCSI and Fibre Channel environments, you can leverage your current network investment.

SIMPLIFY SQL SERVER DATA MANAGEMENT

SnapManager for SQL Server provides you with an easy-to-use, graphical user interface and automates routine data management tasks such as backup, recovery, and data replication. NetApp storage appears as local storage to the SQL Server, and the management of SAN storage is accomplished through native Windows environments. To help you proactively manage your SQL Server environment, you can set up automatic e-mail alerts, and, to help you determine the optimal configuration for peak SQL Server performance, SnapManager automatically tracks database configuration changes, which you can access online in an easy-to-read format.

MAXIMIZE SQL SERVER DATA AVAILABILITY

SnapManager for SQL Server helps you meet stringent service-level agreements by significantly reducing planned and unplanned downtime. You further minimize scheduled downtime by enabling administrators to

add storage on the fly while SQL Server databases remain online and without impacting your database users. Through tight integration with SQL Server applications, SnapManager helps you make sure that each backup is valid and available for restoration by automating the process of verifying the consistency of database backups. And by reducing restore times to minutes, you can further minimize downtime and enhance application availability.

ACCELERATE DEVELOPMENT AND TESTING

SnapManager for SQL Server leverages FlexClone® to allow you to create several database copies for use in development and testing processes. Using an intuitive wizard-based tool, SnapManager for SQL Server lets you quickly create clones that consume additional disk space only as changes are made. As a result, you can create clones quickly whenever you need them with minimal impact in terms of space and wasted time. With the cloning capabilities of SnapManager for SQL Server, you can speed up development and deploy applications faster than ever before.

INCREASE DATA PROTECTION

You can minimize exposure to data loss by performing frequent backups with our fast, nondisruptive Snapshot™ technology. SnapManager takes only minutes to do a full backup and requires only minimal disk space. This dramatically reduces backup window time and enables you to make more frequent and complete backups. More than 200 active Snapshot copies can be kept at any one time with negligible performance impact. Since SnapManager for SQL Server is integrated with Protection Manager and SnapVault®, you can increase your level of data protection by archiving your backups as well as being able to restore them on lower-cost secondary storage.

With SnapManager for Microsoft SQL Server, you can plan and implement a highly reliable disaster recovery strategy for your SQL Server data. Together with NetApp SnapMirror®, you can simplify remote replication of SharePoint Server data so it can be recovered rapidly in the event of a disaster.

SYSTEM REQUIREMENTS

NetApp SnapManager for Microsoft SQL Server supports:

- Windows Server 2003 and 2008 Standard Edition/Enterprise Edition
- Microsoft SQL Server 2000 Standard Edition/Enterprise Edition SP4, Microsoft SQL Server 2005 Standard Edition/Enterprise Edition SP2, and Microsoft SQL Server 2008 Standard Edition/Enterprise Edition
- Fibre Channel or iSCSI
- x86, x64, and IA64 platforms
- NetApp SnapDrive® for Windows 6.0.1
- Windows Guest OS on VMware ESX 3.0.2 (Update 1) and Microsoft Hyper-V

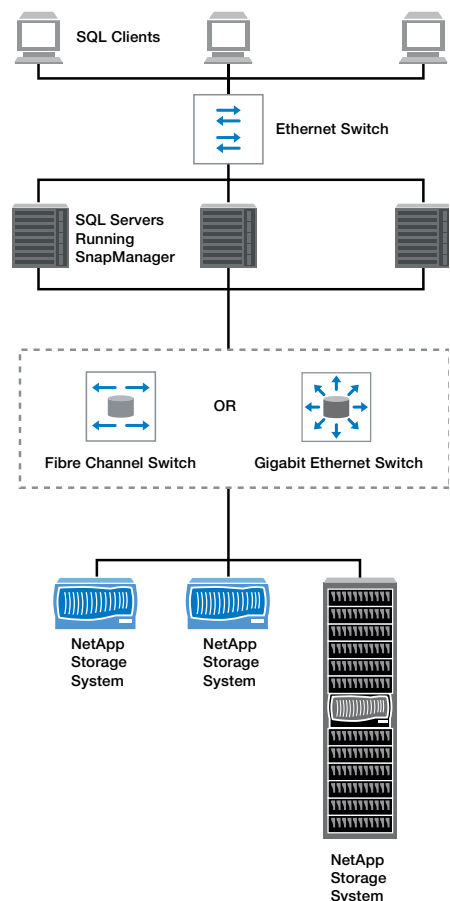


Figure 1) SnapManager in a Fibre Channel/iSCSI environment.



www.netapp.com

NetApp creates innovative storage and data management solutions that accelerate business breakthroughs and deliver outstanding cost efficiency. Discover our passion for helping companies around the world go further, faster at netapp.com.

© 2009 NetApp. All rights reserved. Specifications are subject to change without notice. NetApp, the NetApp logo, Go further, faster, FlexClone, SnapDrive, SnapManager, SnapMirror, Snapshot, and SnapVault are trademarks or registered trademarks of NetApp, Inc. in the United States and/or other countries. Microsoft, Windows, and SQL Server are registered trademarks and Hyper-V is a trademark of Microsoft Corporation. VMware is a registered trademark of VMware, Inc. All other brands or products are trademarks or registered trademarks of their respective holders and should be treated as such. DS-2453-0609